



IRIS Inspection machines

“Innovative cold end inspection increasing
your productivity”

IRIS *Inspection machines*

13th March 2015
Glasspex 2015

Agenda overview

1. IRIS company background
2. Innovative inspection solutions
3. New software modules for high level inspection

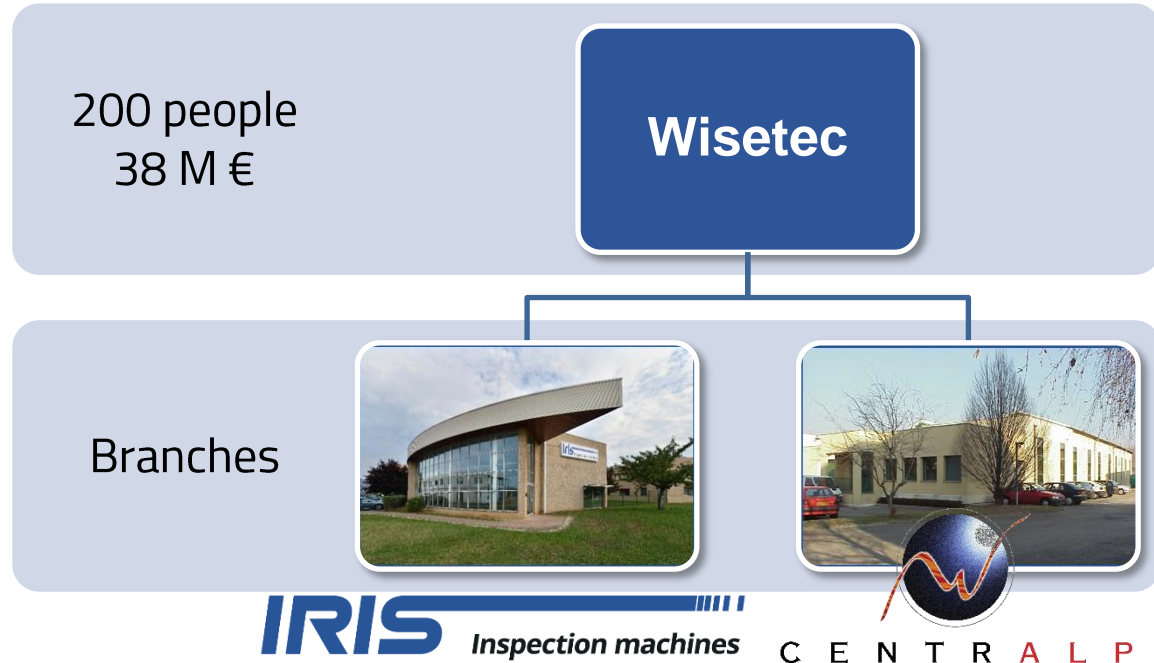


1. IRIS Company Background

A HIGH TECH GROUP

1. IRIS Company Background

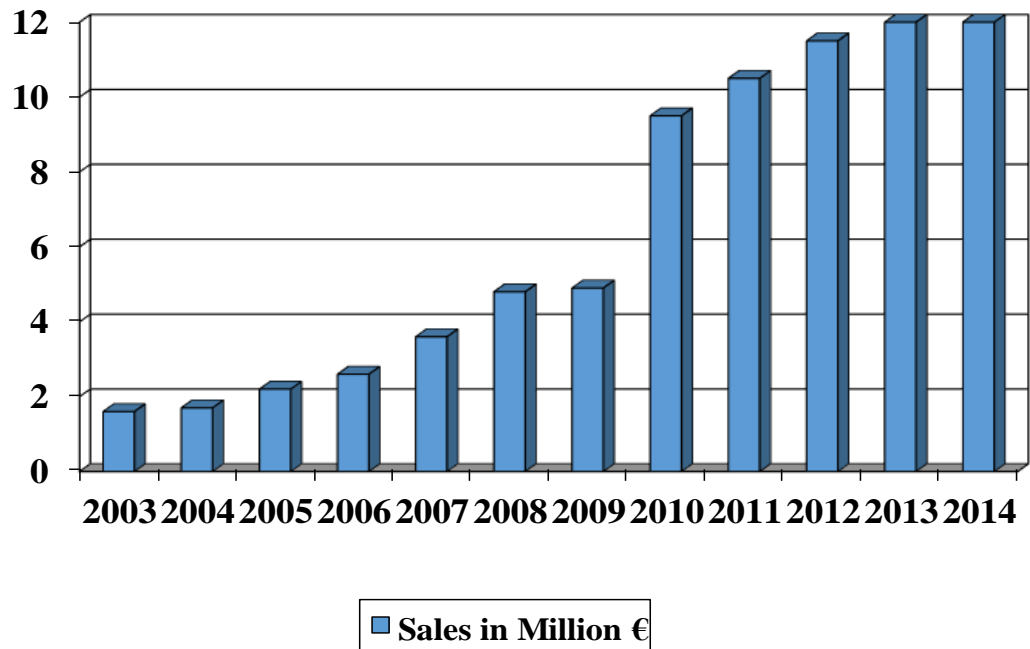
1.1 Company profile



1. IRIS Company Background

1.2 Company Turnover

IRIS's turnover over 10 years



1. IRIS Company Background

1.3 New Investments

HIRING

- 200 people in the Group \Rightarrow 60 in R&D
- Growing Customer service
- Growing R&D department

1. IRIS Company Background

1.3 New Investments

NEW PREMISES

- Common place for machine assembly and offices
- New training center





1. IRIS Company Background

1.4 IRIS Offices

INTERNATIONAL PRESENCE

- Beijing
- Bangkok
- Chicago
- Mexico
- Sao Paulo -> new technical center
- Network of 15 representatives worldwide

1. IRIS Company Background

1.5 New Success



The screenshot shows the Glass International website. The header includes the 'Glass INTERNATIONAL' logo and a navigation bar with links: Home, Glass Industry News, Events Diary, Features, Media Pack, Issues, Subscribe, Advertise, and Di. A banner for the '17TH INTERNATIONAL EXHIBITION FOR GLASS PRODUCTS, MANUFACTURING, PROCESSING AND FINISHING TECHNOLOGY' is dated '8-11 June 2015'. The main article is titled '55 latest generation Iris inspection machines sold since glasstec' and is dated 'February 03, 2015'. The text describes the positive feedback for Iris Evolution glass container inspection machines. An image of the 'evolution' machine is shown. The article concludes by stating that the Evolution range now provides better performance than ever, thanks to its new PC, bigger HD touch screen (21.5in), new HD cameras and innovative software.

Glass INTERNATIONAL

17TH INTERNATIONAL EXHIBITION FOR
GLASS PRODUCTS, MANUFACTURING,
PROCESSING AND FINISHING TECHNOLOGY

8-11 June 2015

55 latest generation Iris inspection machines sold since glasstec

February 03, 2015

Iris Inspection machines has received positive feedback from customers throughout the world since introducing its latest generation Evolution glass container inspection machines at glasstec exhibition last October.

To date, 55 new machines have been delivered to glassworks in Europe, the Middle East and the Americas, providing enhanced inspection precision that is easy to use and contributes positively to plant efficiency improvements.

The Evolution range now provides better performance than ever, thanks to its new PC, bigger HD touch screen (21.5in), new HD cameras and innovative software. Within its newly designed processing unit, Iris has reduced maintenance costs via the design and assembly employed.



NEW SUCCESS

Europe

Verallia Sevilla

Verallia Cognac

Verallia Zorya

Stölzle Wymiarki

Borgonovo

Latin America

O-I Peru

Verallia Brazil Estancia

Verallia Brazil Sao Paolo

Weathon do Brazil

The background of the slide is a photograph of industrial inspection equipment, overlaid with a semi-transparent blue filter. On the left, a machine is labeled 'evolution 5'. To its right is a larger machine labeled 'evolution 12', which features a monitor screen and various control buttons. The equipment is situated in a clean, industrial environment.

2. Innovative Inspection Solutions Evolution 12

Sidewall inspection
Sidewall stress inspection
Geometry inspection

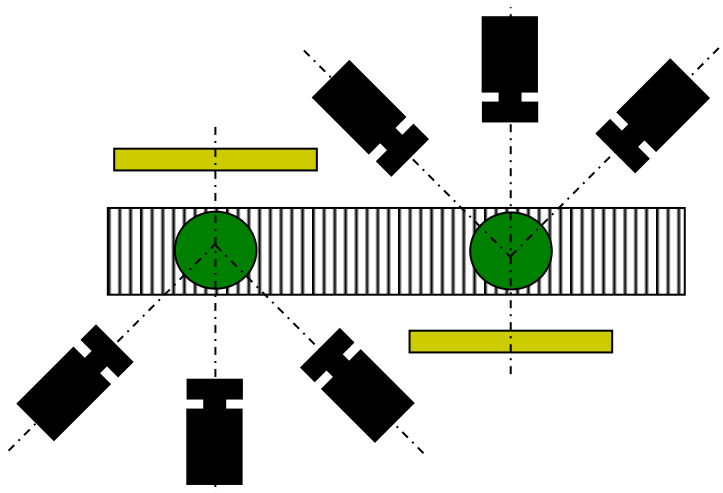
evolution5

evolution12



2. Inspection solutions

2.1 Evolution 12



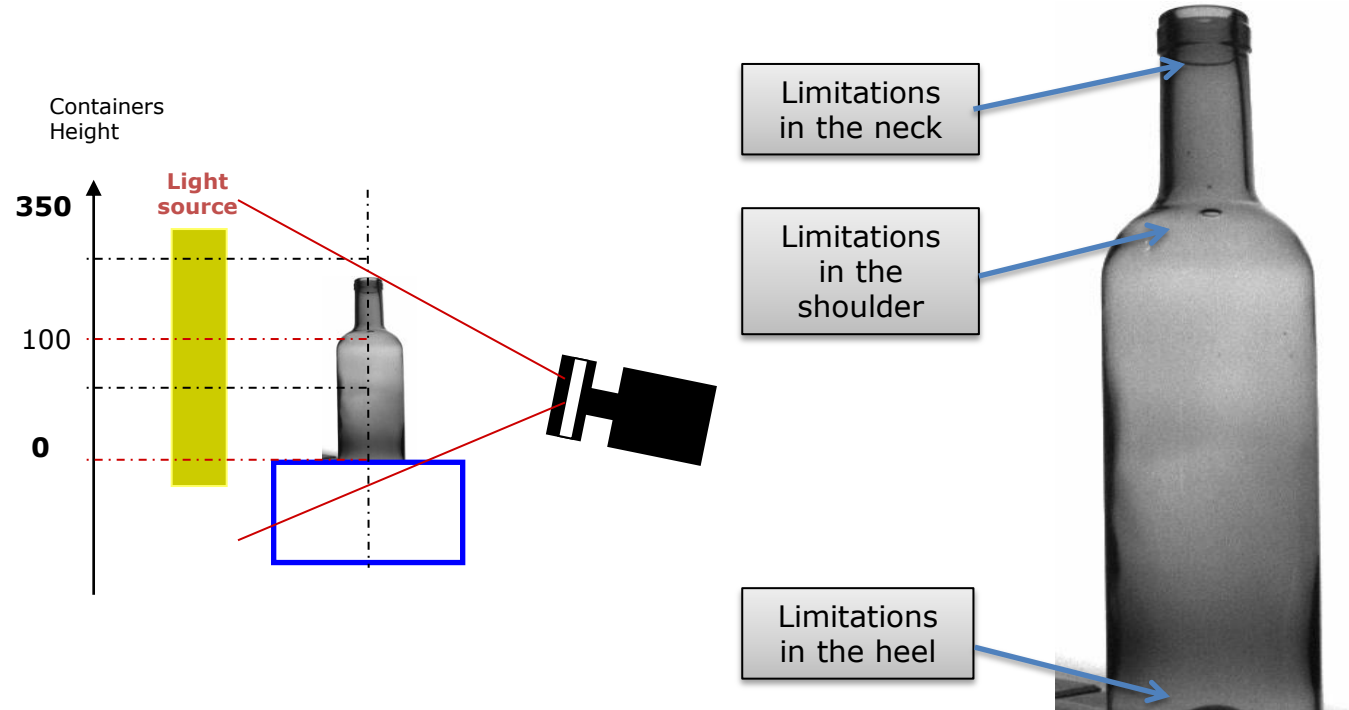
12 viewing angles

- All cameras are in a fixed position
- No mechanical and no optical adjustments.
- 360° overlapping

View of a wine bottle with one camera only

2. Inspection solutions

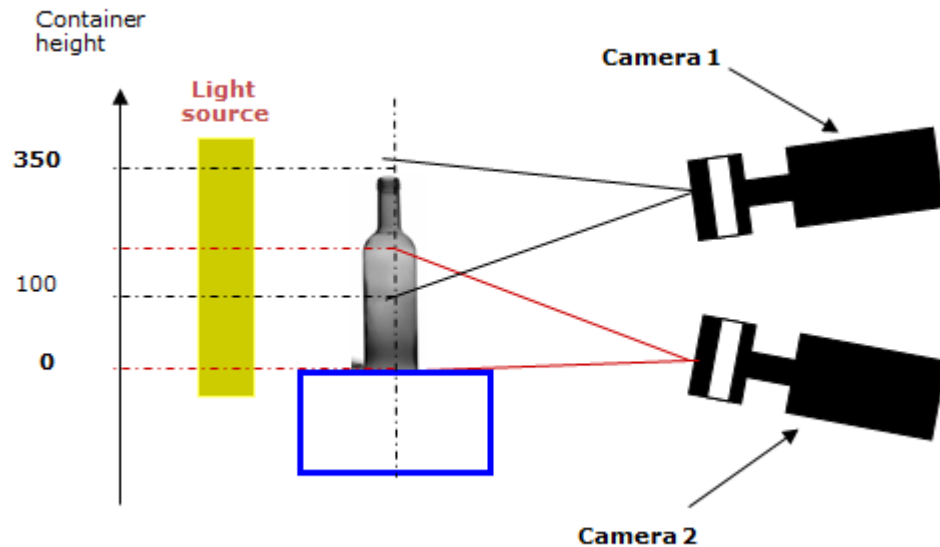
2.1 Evolution 12



Same bottle seen with 2 cameras

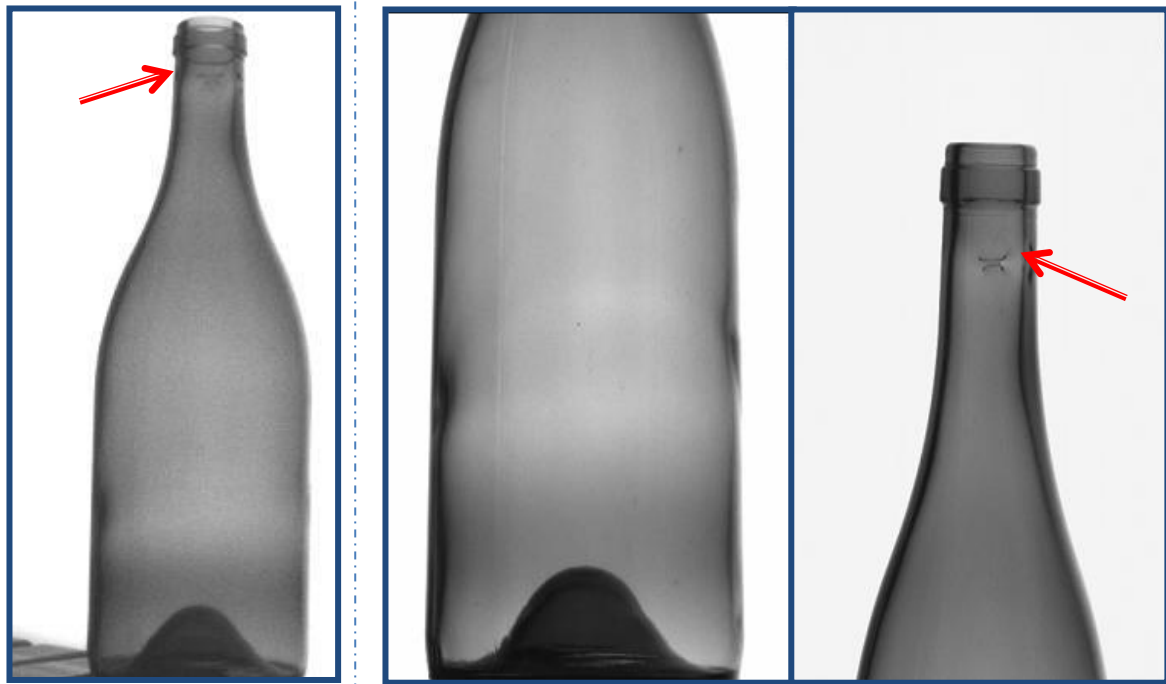
2. Inspection solutions

2.1 Evolution 12



2. Inspection solutions

2.1 Evolution 12

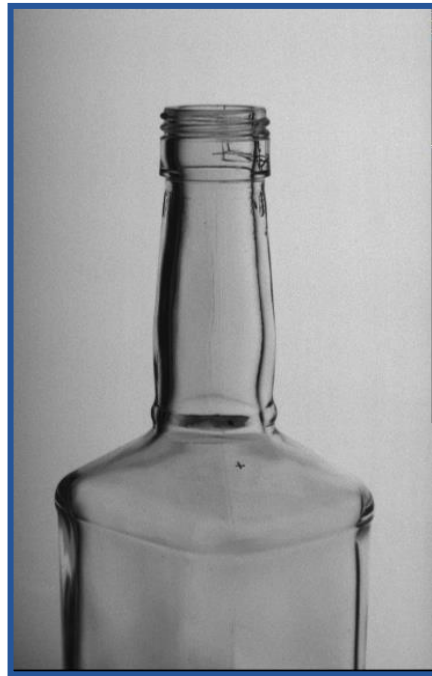


Bottle seen with 1 camera only
Same bottle seen with 2 cameras

2. Inspection solutions

2.1 Evolution 12

The zones with shadows on one view
are clear on the other view



The background image shows industrial inspection equipment. On the left, a unit is labeled 'evolution 5'. To its right, another unit is labeled 'evolution 12'. Both units are dark-colored with metallic frames and are mounted on casters. The scene is dimly lit, with a blue tint overlaid on the entire image.

2. Innovative Inspection Solutions Evolution 5

Base
Base Stress
Finish
Mould Number Reader

Finish, base, mould number reading and base stress inspection

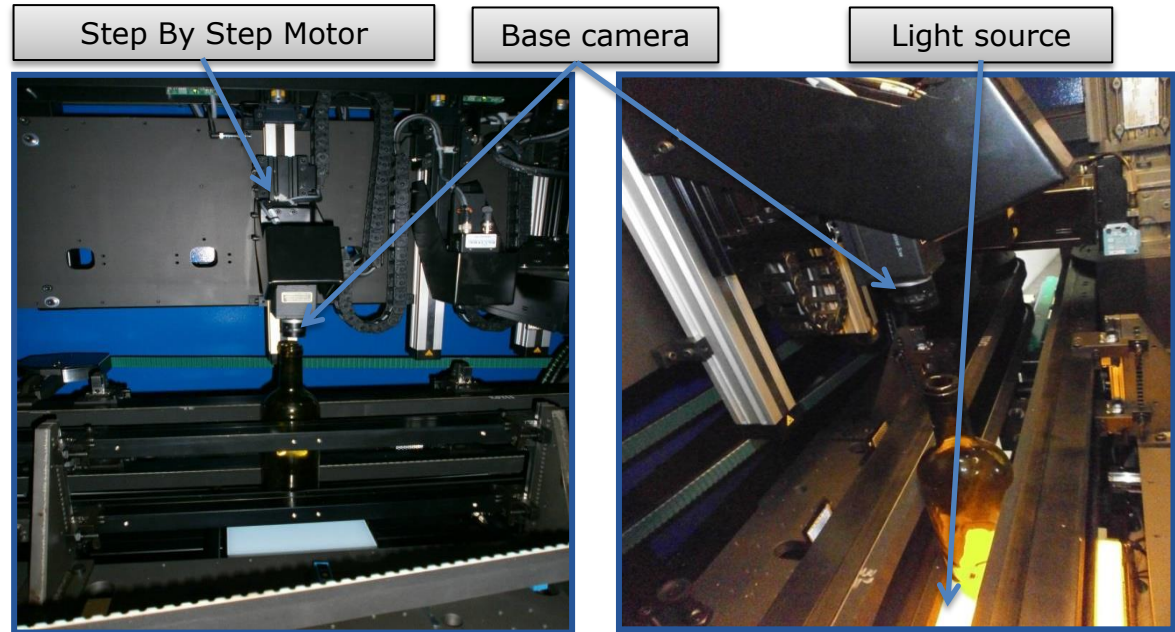
2. Inspection solutions

2. Evolution 5



2. Inspection solutions
2. Evolution 5

Base and Base Stress inspection



The background of the slide features a blue-tinted photograph of industrial inspection equipment. On the left, a machine is labeled 'evolution 5'. On the right, a larger machine is labeled 'evolution 12'. Both machines have control panels with various buttons and screens. The scene is set in a clean, industrial environment.

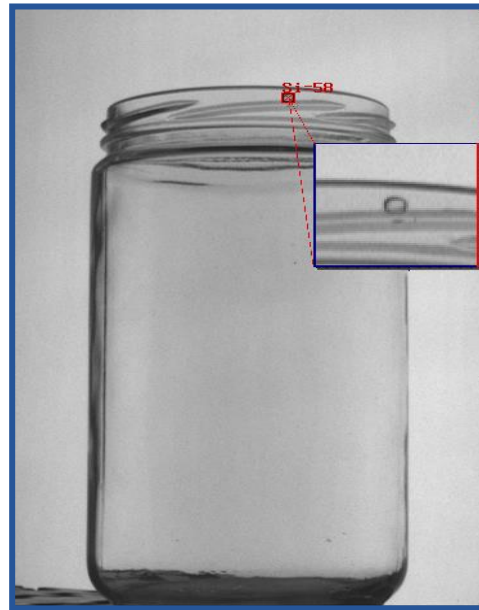
3. New Software Inspection Modules

- Module Intelligent Machine
- Module Engraving Inspection
- Module Asymmetric Container
- Module Multi-container Inspection
- Module Sidewall
- Module XXL Container
- Module Black glass

3. New Inspection Modules

3.1 Module Intelligent Machine

Defects in difficult zones : Finish thread

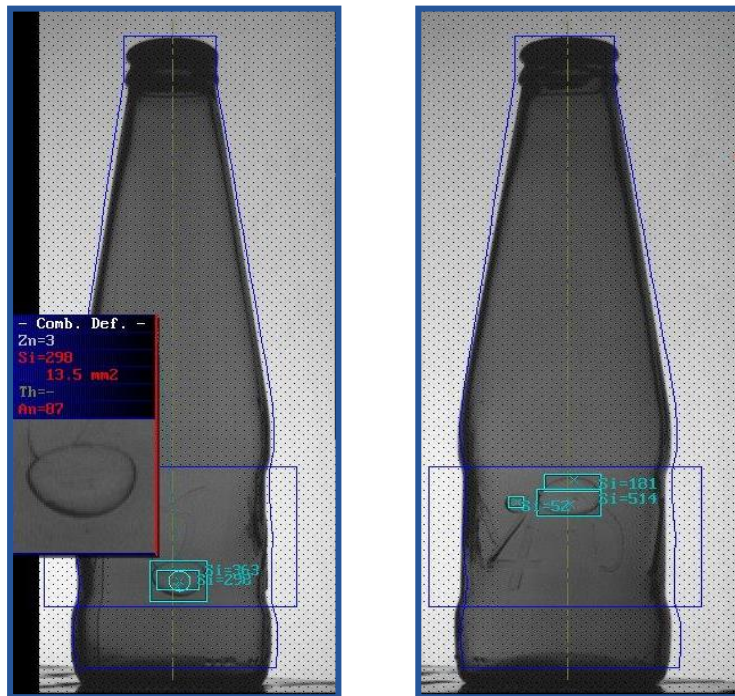


3. New Inspection Modules

3.2 Module Engraving Inspection

Detection in Engraved Zones

Example : Detection in the engraved area of 1664 beer bottle



3. New Inspection Modules

3.3 Module Asymmetric Container

Inspection of asymmetric containers

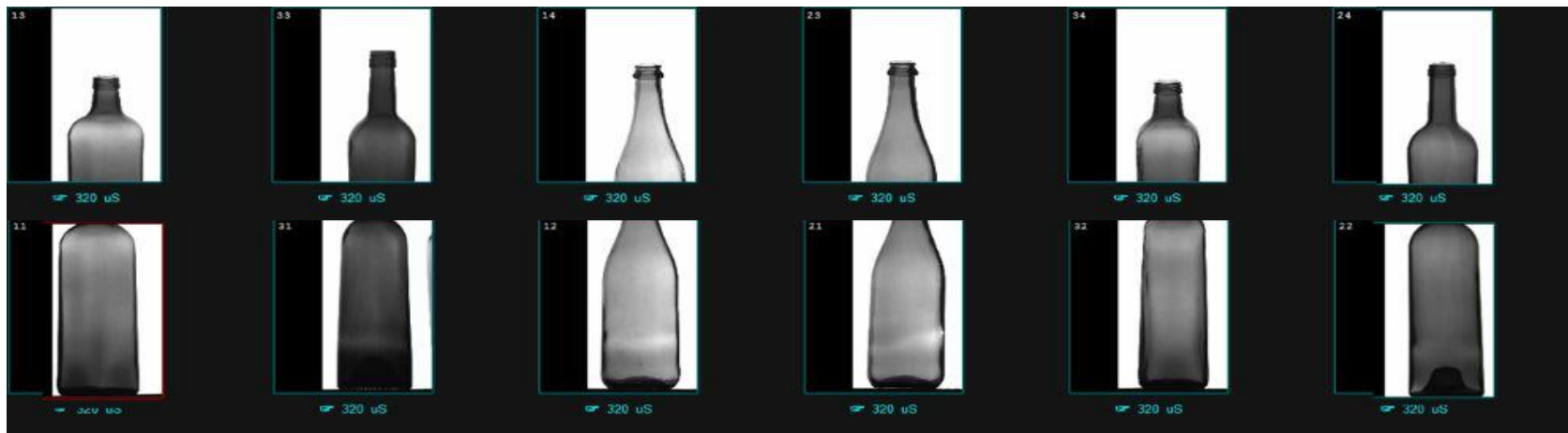
- No mechanical orientation needed
- Virtual article orientation by software



3. New Inspection Modules

3.4 Multi-Container Inspection

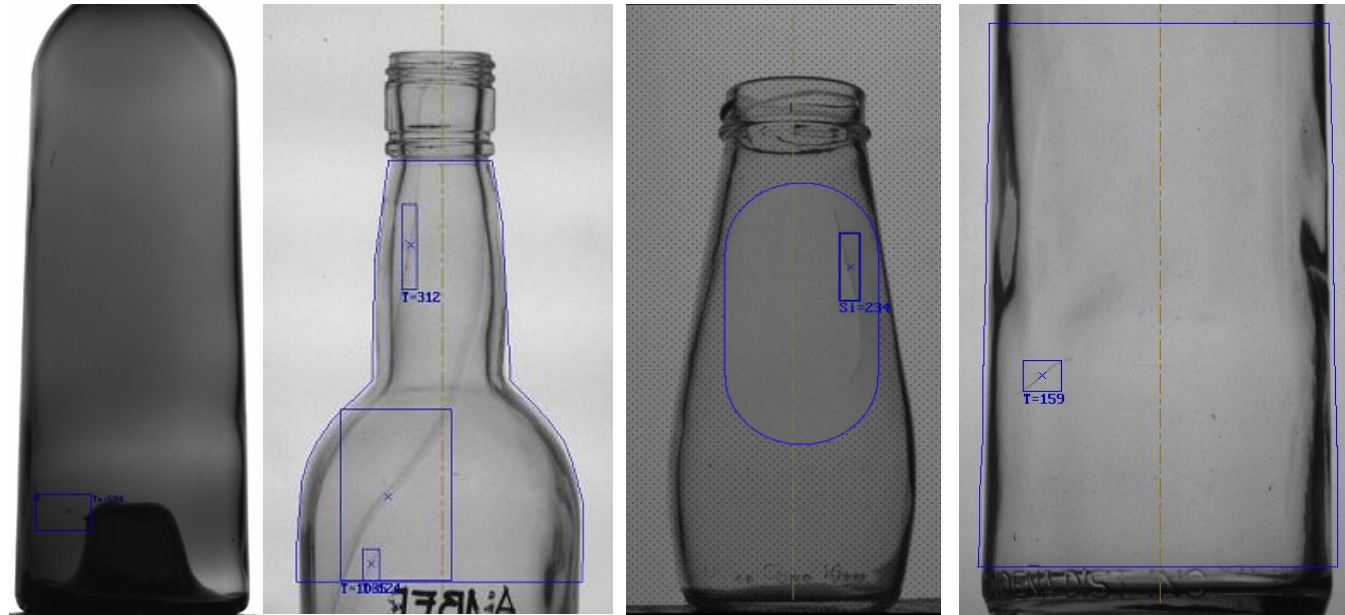
Inspection of Multi-gob production



3. New Inspection Modules

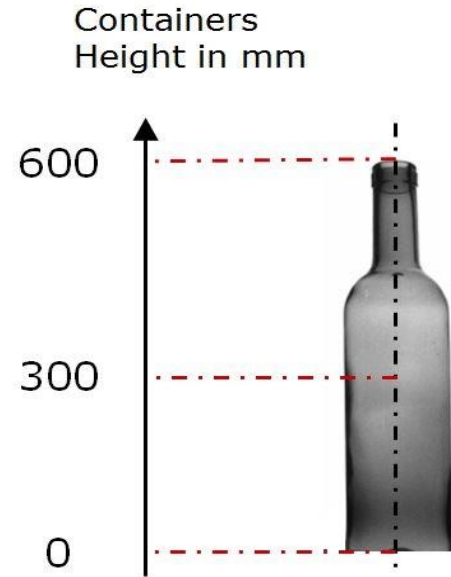
3.5 Module Sidewall

Low contrasted sidewall defects



3. New Inspection Modules

3.5 Extra Large container



Up to 550 mm height
Up to 190 mm diameter

3. New Inspection Modules

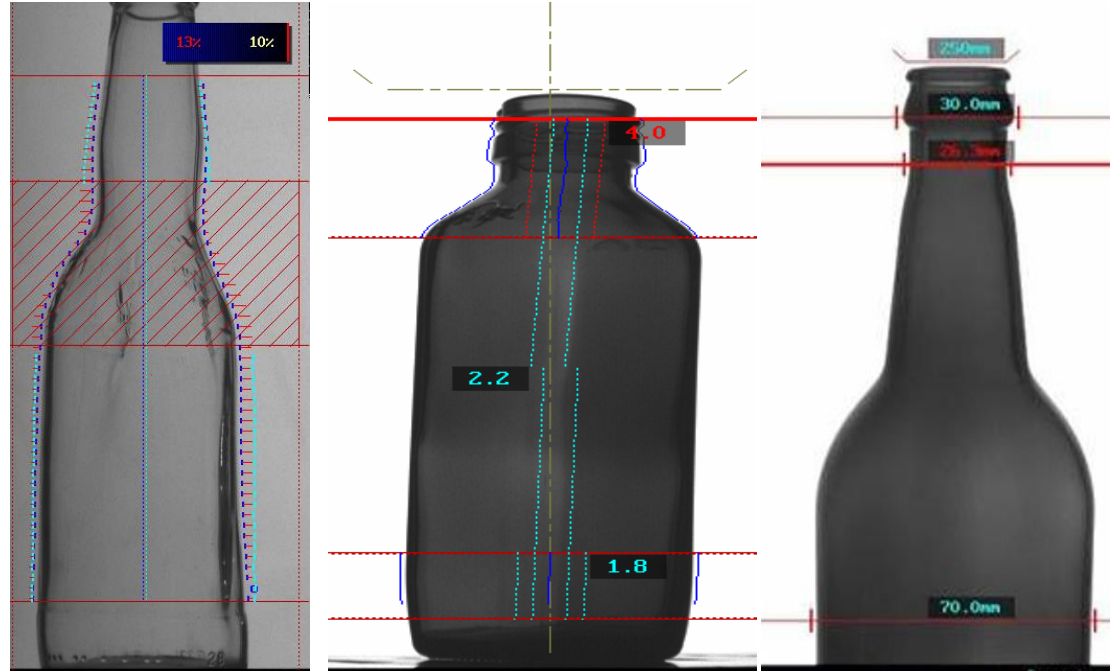
3.6 Black Glass



Inspection of dark containers is possible thanks to the special lightsource dedicated to black glass illumination

3. New Inspection Modules

3.7 Geometry inspection



Deformed body, Broken bottles, Monsters, Laying articles, Lean articles

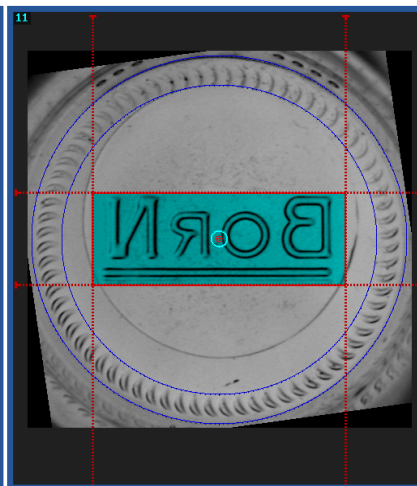
3. New Inspection Modules

3.8 Module Dynamic Engraving

Inspection of base engravings



BEFORE ROTATION



AFTER ROTATION

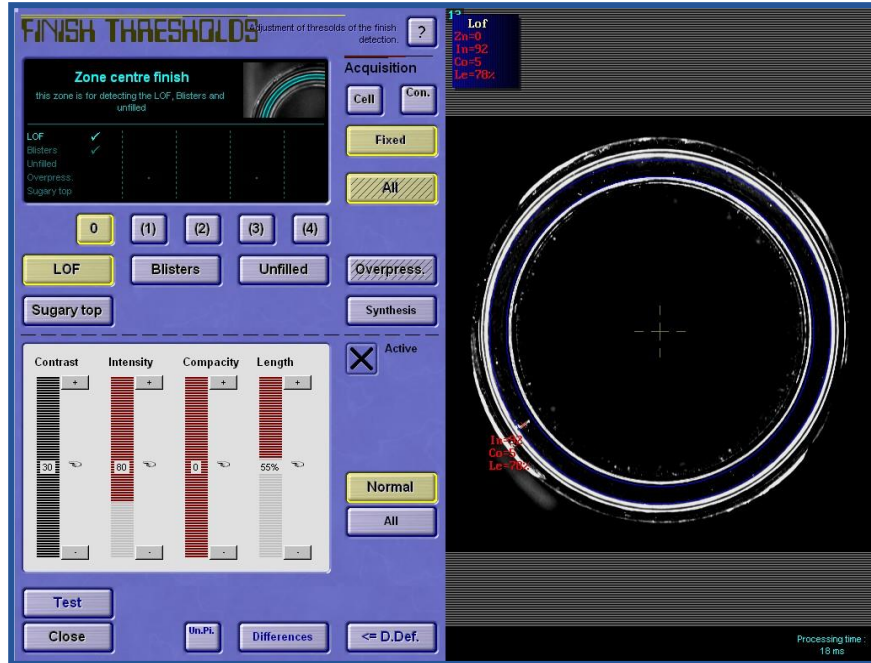


AFTER CENTERING

3. New Inspection Modules

3.9 Finish Inspection

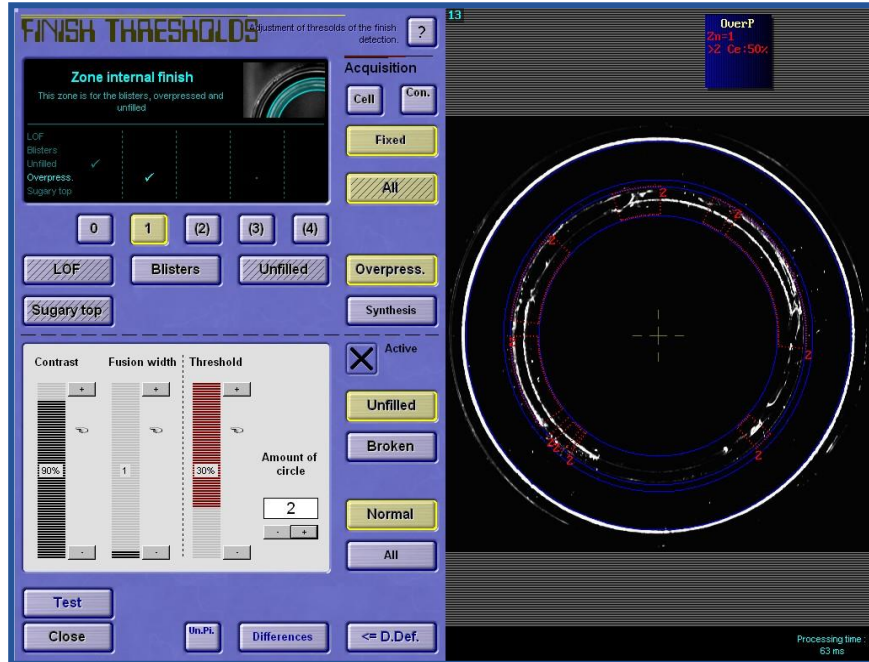
Line Over Finish



3. New Inspection Modules

3.9 Finish Inspection

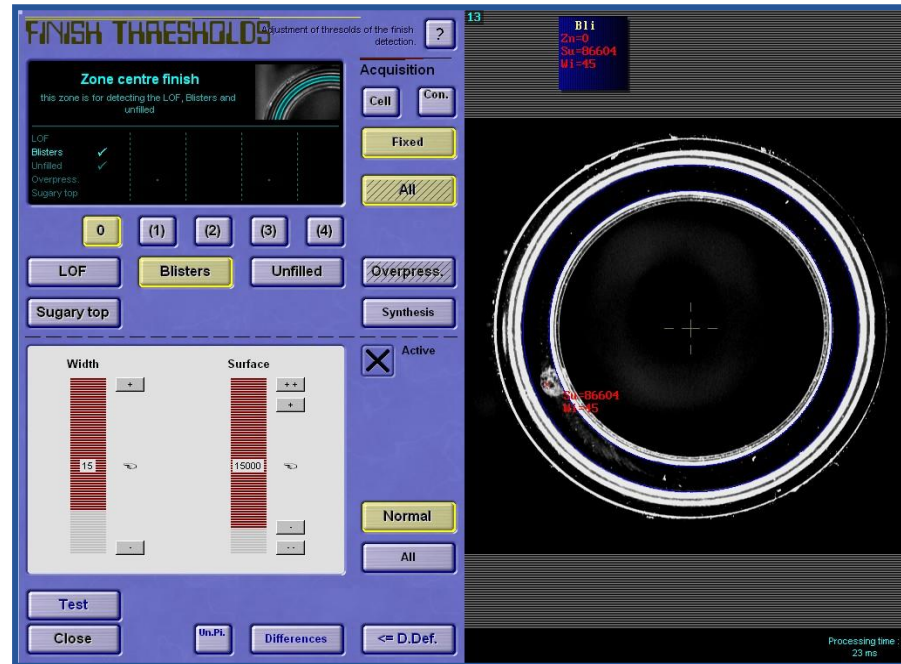
Overpressed & Wire Edge



3. New Inspection Modules

3.9 Finish Inspection

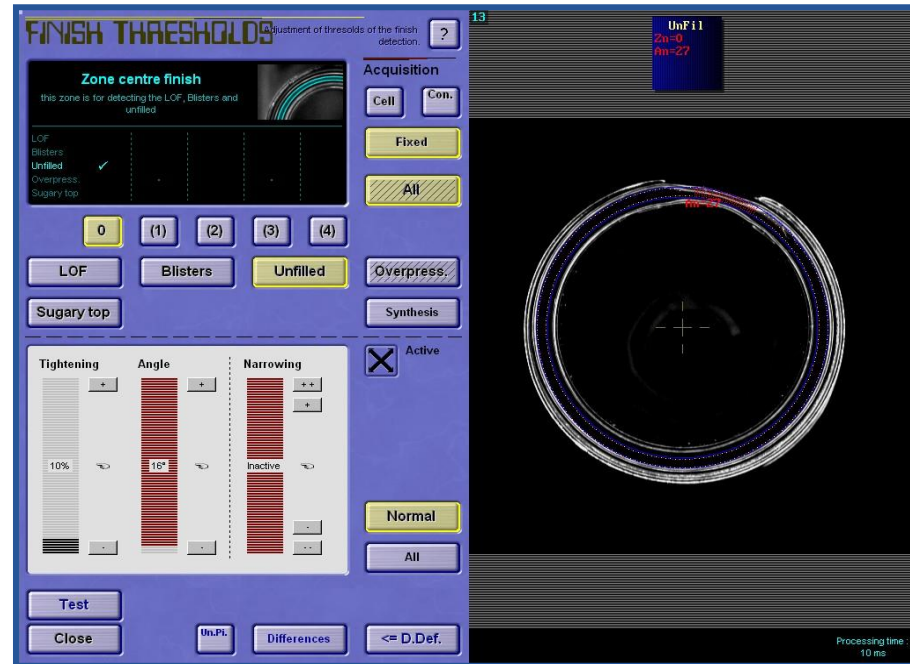
Blister & Chipped Finish



3. New Inspection Modules

3.9 Finish Inspection

Unfilled Finish



Questions ?

